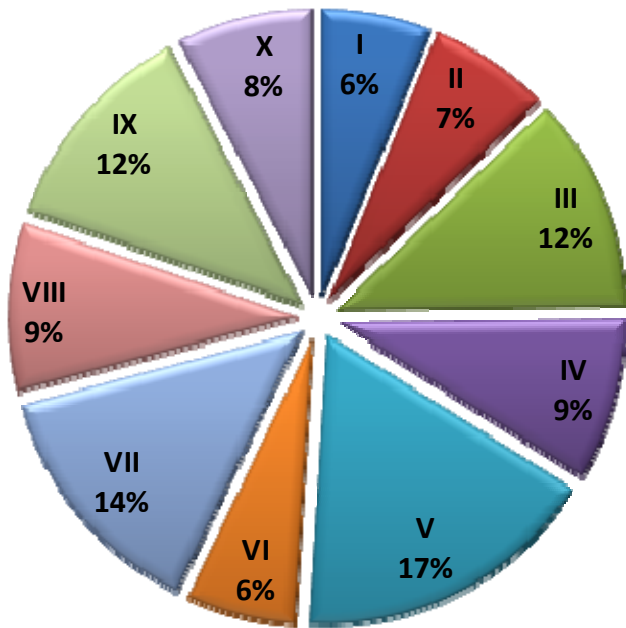


# State-Wide Agriculture Education Teacher's Survey Regarding Texas FFA Leadership



The following survey results are the responses of:

**672 Teachers**

Teachers responded to a unique email request to complete the online survey during one week:

**Monday, Sept 8<sup>th</sup> – Friday, Sept 12<sup>th</sup>**

Email addresses were collected from District lists and the AST Directory. Teachers responded from all Areas across Texas. Three email reminders encouraged all Teachers to complete the survey.

- Reviewed and approved by Area supervisors
- Allowed teachers to have only one response
- Is a valid representation of all Teachers in Texas

## Service Ratings

Results are focused on services and overall satisfaction with FFA. *Poor* and *Below Avg* are “low” ratings. *Excellent* and *Above Avg* are “high” ratings:

- JudgingCard.com FFA service is rated high by **97%** of teachers
- TexasFFA.org website is rated high by **60%** of teachers
- FFALive.org FFA service is rated low by **53%** of teachers
- Texas FFA’s coordination of events, paperwork, operations is rated high by **56%** of teachers
- Texas FFA’s ability to make decisions in a fair and impartial manner is rated low by **57%** of teachers
- **60%** rate low Texas FFA’s ability to seek and act on the advice of teachers

Judgingcard.com website is well maintained.

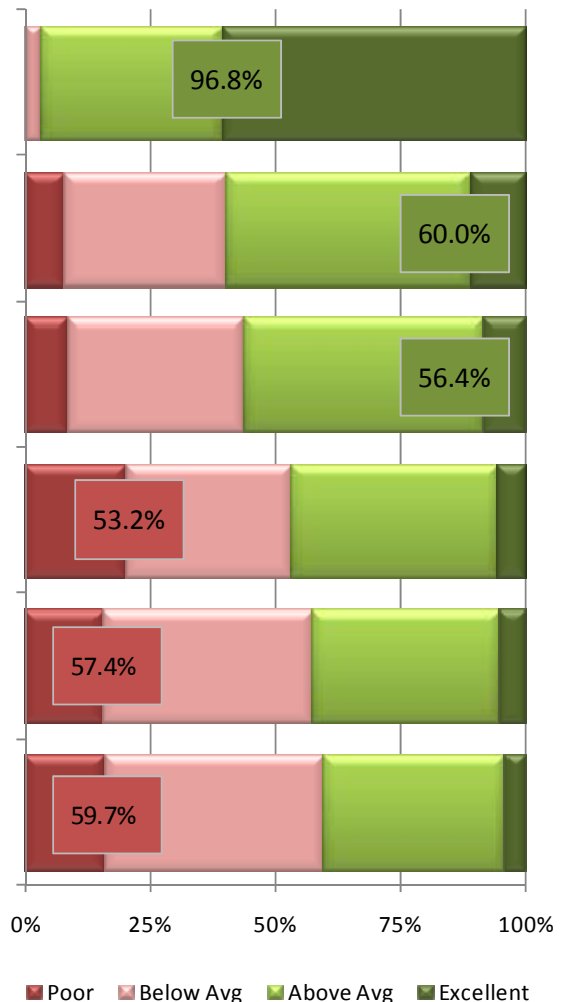
TexasFFA.org website is managed well.

The Texas FFA's coordination of events, handling of paperwork and day-to-day operations

FFALive.org registration web site managed well.

Texas FFA makes operational decisions in a fair an impartial manner.

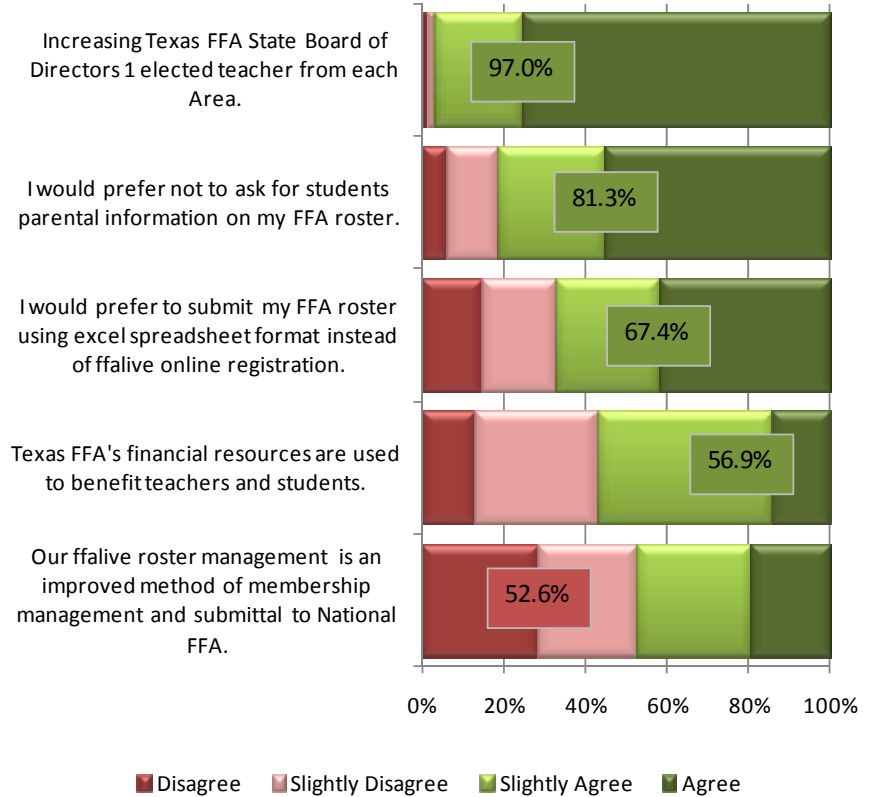
Texas FFA does a good job of seeking and acting on the advice of teachers.



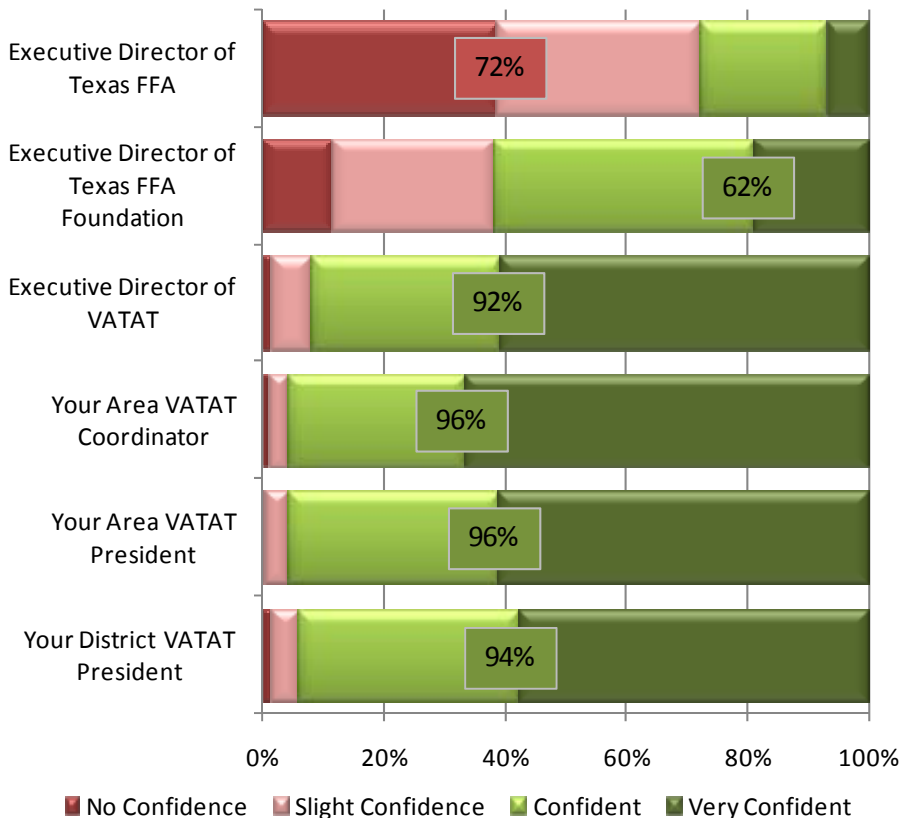
## Issue Statements

Several issues were presented to Teachers for their opinions. Percentage of Teachers who *Slightly Agree* or *Agree* with the statement:

- **97%** - Nearly all teachers agree to increase the FFA Board by 1 elected teacher from each Area.
- **81%** - Four out of five teachers prefer not to ask for parental info on FFA Roster.
- **67%** - Two out of three teachers prefer to submit FFA rosters using Excel.
- **57%** - A little more than half of teachers think FFA's financial resources are benefitting teachers and students.
- **48%** - Slightly less than half of teachers think FFA Live is a better method of Roster Management.



## Confidence in Leadership



Teachers were asked to rate their level of confidence in their Texas FFA leadership structure / chain of command. Percentage of Teachers who are *Confident* or *Slightly Confident*:

- **28%** - Executive Director of Texas FFA
- **62%** - Executive Director of Texas FFA Foundation
- **92%** - Executive Director of VATAT
- **38.6%** of teachers indicated *No Confidence* for Executive Director of Texas FFA
- **72.1%** of teachers indicated *No Confidence* or only *Slight Confidence* for Executive Director of Texas FFA
- Area and District VATAT Presidents and Area Coordinators received high levels of confidence.